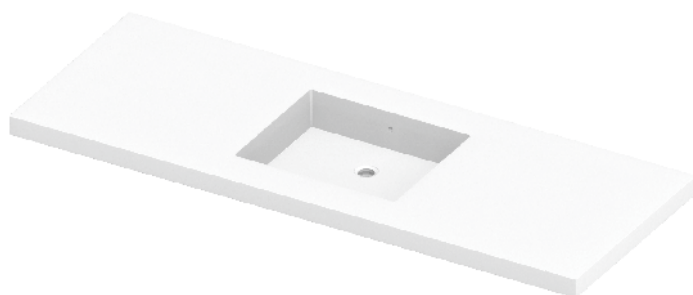


# SLAB Countertop 2"



**Model Shown: 9118-61-CTR-H0**

61" Countertop with Integrated Basin Centered on Deck, No Faucet Drilling

- **SOLID SURFACE COUNTERTOP WITH INTEGRATED BASIN**
- **ENTIRELY CASTED IN ONE-PIECE OF SOLID SURFACE OPAQUE POLYMER RESIN**
- **INTEGRAL BASIN 17" X 14" X 4" DEPTH IS CENTERED ON DECK STANDARD**
- **INTEGRATED OVERFLOW WASTE OUTLET**

**MATERIAL OF CONSTRUCTIONS PHYSICAL PROPRIETIES IN COMPLIANCE WITH:**

**CSA B45.5/IAPMO Z124  
ANSI/ICPA SS-1**

(REFER TO TECHNICAL DATA SHEET FOR COMPLETE DETAILS)

- **GREENGUARD GOLD CERTIFIED FOR LOW EMISSIONS**



Recyclable  
Product



ADA COMPLIANT

DESCRIPTION	MODEL/OPTION #
<b>A ORIENTATION</b> - Required Selection INIT.	
<input type="checkbox"/> <b>25" SLAB Countertop</b> 25" Length x 22" Width x 2" Height	9118-25
<input type="checkbox"/> <b>31" SLAB Countertop</b> 31" Length x 22" Width x 2" Height	9118-31
<input type="checkbox"/> <b>37" SLAB Countertop</b> 37" Length x 22" Width x 2" Height	9118-37
<input type="checkbox"/> <b>49" SLAB Countertop</b> 49" Length x 22" Width x 2" Height	9118-49
<input type="checkbox"/> <b>61" SLAB Countertop</b> 61" Length x 22" Width x 2" Height	9118-61
<input type="checkbox"/> <b>72" SLAB Countertop</b> 72" Length x 22" Width x 2" Height	9118-72

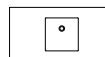
**Add (+) B SOLID SURFACE COLOR** - Required Selection INIT.

**Corterra® Solid Surface Color**

Color: \_\_\_\_\_

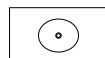
(Refer to <https://www.neo-metro.com/luxury-solid-surface> for available colors)

**Add (+) C BASIN SELECTION** - Required Selection INIT.



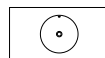
☐ **Square Basin**  
14" L x 14" W x 4" H Basin  
(356 x 356 x 102 mm)

-BBSQ



☐ **Oval Basin**  
14" L x 17" W Basin  
(356 x 432 mm)

-BBOV



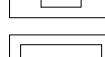
☐ **Round Basin**  
Ø16" Basin  
(Ø 406 mm)

-BBRD



☐ **Ramp Basin**  
14" L x 17" W Basin  
(356 x 432 mm)

-BBRA



☐ **Rectangular Basin**  
33" x 14" Basin (-DBL Not Available)  
(838 x 356 x 102 mm)

-3676



Overflow Waste is Built-in

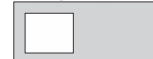
Specify Plate Finish:

☐ Satin (Standard) ☐ High Polish

**REQUIRED**

Please indicate location of basin:

BACK OF DECK



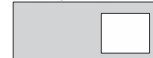
☐ -LH  
Left Offset

BACK OF DECK



☐ -CTR  
Centered

BACK OF DECK



☐ -RH  
Right Offset

BACK OF DECK



☐ -DBL  
Double Basin  
(49" or Greater)

**Add (+) D FAUCET CONFIG.** - Optional Selection INIT.



☐ **No Faucet Hole**  
For wall mounted faucet

- H0



☐ **Single Hole**  
ø1-5/16" Centered Hole

- H1



☐ **6" Centerset**  
(152 mm)

-H36



☐ **8" Centerset**  
(203 mm)

-H38

Customer is required to submit Faucet Spec Sheet to confirm compatibility with Neo-Metro's faucet drilling.

# SLAB Countertop 2"

**PRODUCT Specification . . .** The Slab Countertop is a one-piece, solid surface Deck with an integral Basin.

**The unit is casted** in a solid surface, opaque, polymer resin solid surface material. The durable Deck is resistant to cracking and has excellent thermal shock performance.

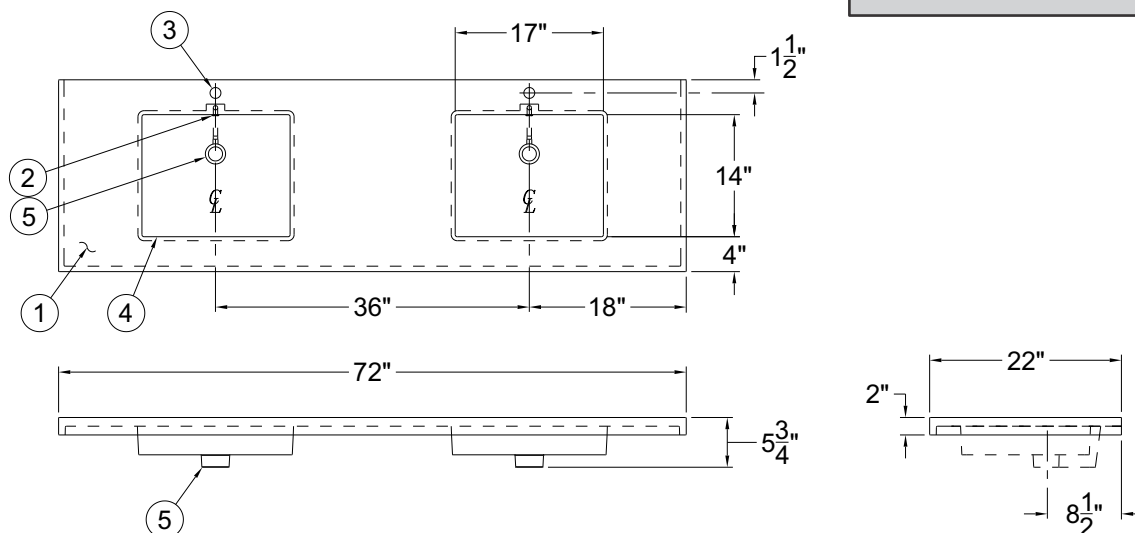
**The Integral Basin,** 14" x 17" x 4" depth (356 x 432 x 102 mm), can be placed on either left (-LH) or right (-RH) side of a 34" (864 mm) Counter space. Left or right is in the orientation of the user facing the Deck. A dual (-DBL) configuration feature two Basins. The Drains will be configured 30" (762 mm) apart.

**Standard 1-5/16" Drain hole** is provided to accommodate any drain assembly with overflow (drain and P-trap not included).

**An Overflow Waste Channel** is also integrated in the casted Basin(s), draining into the Drain assembly. A Satin Finish stainless steel Cover is provided. High Polish Cover may also be specified.

**Faucets are not supplied** but 1-5/16" ( 33.3 mm) holes can be drilled in a pre-configured single-hole (-H1), 6-inch (152 mm) centerset (-H36), 8-inch (203 mm) centerset (-H38) and a No Hole option (-H0), typically for wall mounted Faucets. Neo-Metro requires customers to submit specification sheet of Faucet to confirm compatibility. Custom Faucet configurations may be specified by submitting a completed and signed Faucet Drilling Worksheet. Neo-Metro stainless steel commercial faucets are available and sold separately.

Neo-Metro assumes no responsibility for use of void or suspended data. All dimensions are nominal and subject to manufacturer change without notice.



- ① MODIFIED COUNTER LAV FOR CABINET, BY OTHERS
- ② -OF OVERFLOW
- ③ Ø1-5/16" HOLE FOR FAUCET BY OTHERS

- ④ INTEGRAL BASIN, 14" X 18" X 5"
- ⑤ WASTE OPENING INTENDED FOR 1-1/4" NOMINAL OUTLET PROVIDED FOR WASTE ASSEMBLY



## APPROVAL FOR MANUFACTURE

COMPANY: \_\_\_\_\_

PROJECT NAME: \_\_\_\_\_

SIGNEE'S NAME WRITTEN CLEARLY: \_\_\_\_\_

DATE: \_\_\_\_\_

AUTHORIZED SIGNATURE: \_\_\_\_\_

**⚠ WARNING:** Cancer and Reproductive Harm - [www.P65Warnings.ca.gov](http://www.P65Warnings.ca.gov)

**NEO-METRO® by ACORN®**

A Member of Morris Group International

15125 Proctor Avenue • City of Industry, CA 91746 USA  
TF 800.488.8999 • PH 626.366.4561 • FX 626.961.2200