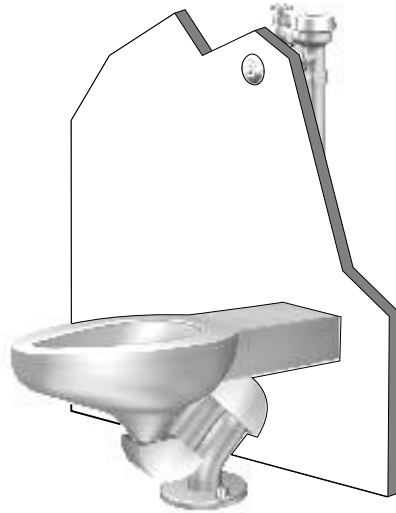


# Metaal Toilet Wall Supply



**8956-W-3**

Wall Supply,  
Floor Mounted, Floor Waste  
COMMERCIAL Metaal Toilet

U.S.Design Patent 470578


Toilets are configured with a 1-1/2" NPT back spud inlet for a wall supply flush valve (flush valve sold separately).

- **Toilet with Patented Exposed Decorative P-Trap**
- **Commercial SIPHON JET Toilet Requiring Commercial Water Supply Line to Operate. Water Flow Pressure 35 psi (2.41 bars); Water Supply Line 1"(25 mm).**
- **WALL SUPPLY (Exposed) Flush Valve Configuration**  
Compatible Flush Valve (Sold Separately) Releases 1.6 Gallons (6 Liters) per Flush. Top Supply Flush Valve configurations are also available.
- **STAINLESS STEEL CONSTRUCTION**  
16 Gage Satin Finish Stainless Steel with Mira (High Polish) Accents on P-Trap
- **ELONGATED TOILET BOWL**  
Punched for Toilet Seat with 5-1/2" (140 mm) Mounting Centers (Seat Sold Separately)
- **ADA Compliant Toilet Available** 
- **ANSI A112.19.2 Compliant** 

DESCRIPTION	MODEL/OPTION #
<b>CONFIGURATION</b> - Required Selection	
	INIT.

**WALL SUPPLY COMMERCIAL METAAL TOILET**  
**On-Floor, Floor Waste Configuration**

**Standard Height Toilet** (15"381 mm) 8956-W-3


 **ADA COMPLIANCY**  
 **ADA Height Toilet** (17"430 mm) 8956-ADA-W-3



ADA compliance is subject to the interpretation and requirements of the local code authority. Please check you local ADA regulations.

FLUSH VALVE SELECTION	INIT.
<b>Wall Supply (Concealed) Flush Valves</b>	

Requires commercial water supply to operate; Water flow pressure 35 psi (2.41 bars); Water supply line is 1" (25 mm) diameter; Flush valve releases 1.6 gallons (6 liters) per flush; flush valve sold separately from fixture.

  **Manual Flush**  FV1.28-W  
 FV1.6-W

  **Hydraulic**  FV1.28-W-H  
ADA Compliant  FV1.6-W-H

  **Electronic Sensor**  FV1.6-W-SO  
Valve requires 120 VAC, 60Hz  FV1.6-W-SO  
Plug-in Power Supply 

**CONSTRUCTION AND PLUMBING INFORMATION**

**Must Specify: Wall Thickness** \_\_\_\_\_

**Must Specify: Wall Type** \_\_\_\_\_  
(Eg. drywall with tile, concrete, etc)

**APPROVAL FOR MANUFACTURE**

COMPANY: \_\_\_\_\_

PROJECT NAME: \_\_\_\_\_

SIGNEE'S NAME WRITTEN CLEARLY: \_\_\_\_\_

DATE \_\_\_\_\_

AUTHORIZED SIGNATURE: \_\_\_\_\_



**WARNING:** Cancer and Reproductive Harm - www.P65Warnings.ca.gov

# Metaal Toilet Wall Supply

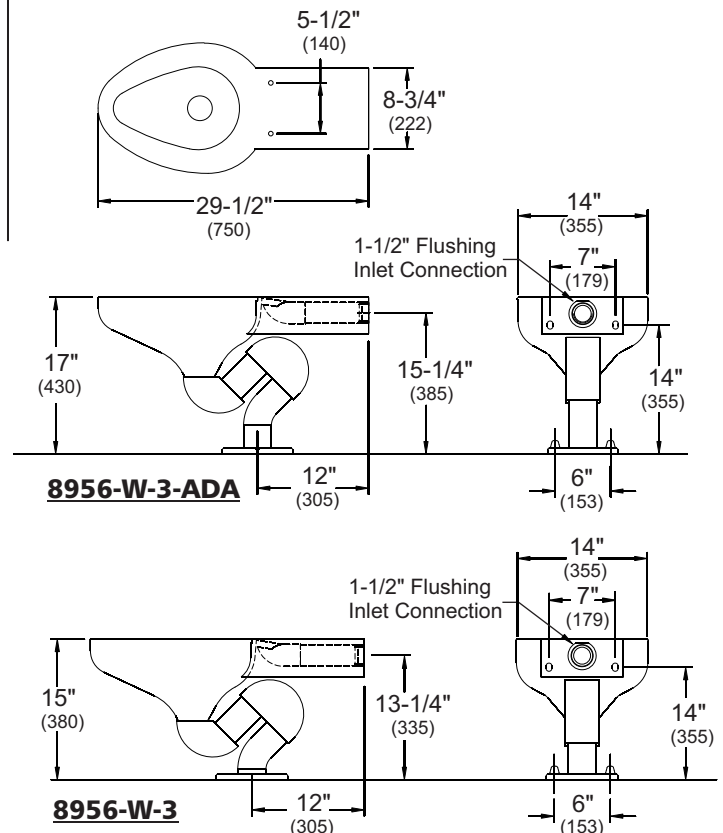


DESCRIPTION	MODEL/OPTION #
<b>ACCESSORIES</b>	
<b>ABS Plastic Elongated Toilet Seats with Open Front</b> <input type="checkbox"/> <b>Black</b>	HS-CB
<b>ABS Plastic Elongated Toilet Seats with Cover</b> <input type="checkbox"/> <b>Satin</b> Chrome Plated	HS-CSF
<input type="checkbox"/> <b>Mira (High Polish)</b> Chrome Plated	HS-CMF
<b>14" x 14" Flush Valve Access Panel</b> <input type="checkbox"/> <b>Satin</b> with Push Button Hole	4080-000-001
<input type="checkbox"/> <b>Mira (High Polish)</b> with Push Button Hole	4080-030-001
<input type="checkbox"/> <b>Satin</b> No Hole	4080-035-001
<input type="checkbox"/> <b>Mira (High Polish)</b> No Hole	4080-036-001
<b>10" x 10" Flush Valve Access Door</b> <input type="checkbox"/> <b>Satin</b>	0530-135-001
<input type="checkbox"/> <b>Mira (High Polish)</b>	0530-118-001
<b>12" x 12" Tile-In Flush Valve Access Door</b> <input type="checkbox"/> <b>Satin</b>	0530-140-001

**PRODUCT Specifications...** The Metaal toilet features a patented\* exposed decorative, geometric P-trap design. Mira Finish (high polished) accents highlighting the P-trap elbows. Toilet is fabricated from 16 gage, type 304 stainless steel with an elongated bowl punched for a standard toilet seat with 5-1/2" (140 mm) mounting centers (seat sold separately). Toilet rim on standard toilet is 15" (381 mm) from finished floor.

A 17" (430 mm) toilet seat height is available to comply with ADA regulations. ADA compliance is subject to the interpretation and requirements of the local code authority. Please check your local ADA regulations.

**PLUMBING Specifications...** This siphon jet toilet is configured for a wall supply (concealed) flush valve (sold separately) utilizing a commercial 1" (25 mm) water supply line. The 1-1/2" (38 mm) flushing inlet connection is located at the rear of the toilet, 13-1/4" (335 mm) and 15-1/4" (385 mm), above the finished floor.. A circular base connects to standard floor waste connection 12" (305 mm) from finished wall with the upper rear mounted to the wall.



Neo-Metro assumes no responsibility for use of void or suspended data. All dimensions are nominal and subject to manufacturer change without notice.