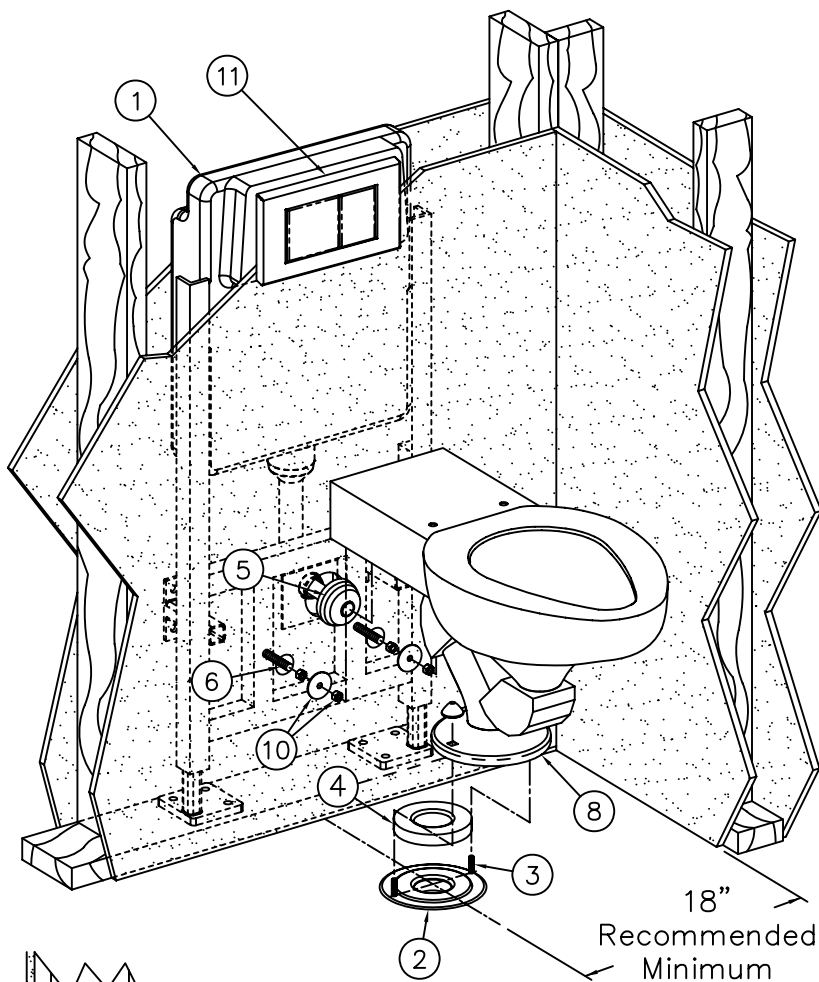


NOTE:
INSTALLER RESPONSIBLE FOR INSTALLATION COMPLIANCE WITH ALL LOCAL BUILDING AND PLUMBING CODES.

INSTALLATION INSTRUCTIONS FOR TOILET WITH GEBERIT IN-WALL FLUSHING SYSTEM:

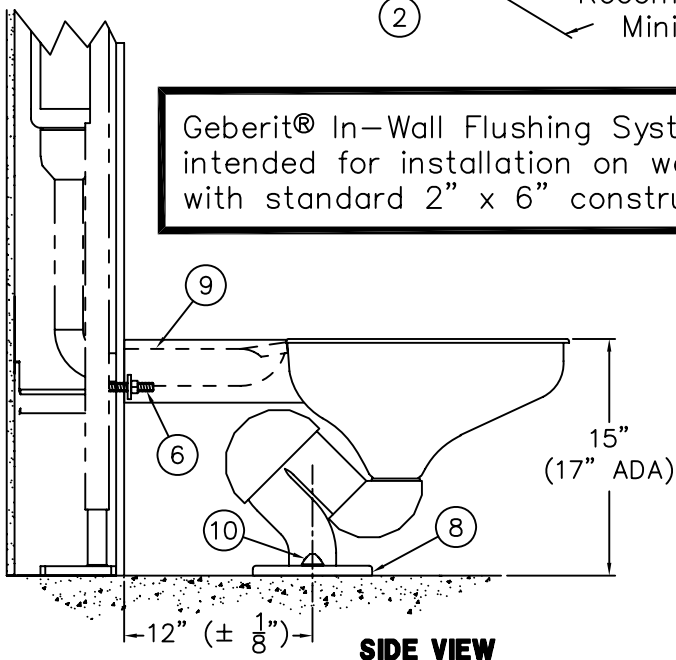


INSTALL THE GEBERIT IN-WALL TANK AND BOWL CARRIER SYSTEM (1) PER GEBERIT INSTALLATION INSTRUCTIONS. DISCARD WALL WASTE ASSEMBLY. NOTE: INSTALLATION OF METAL FLOOR WASTE OUTLET IS COMPARABLE TO PORCELAIN FIXTURES.

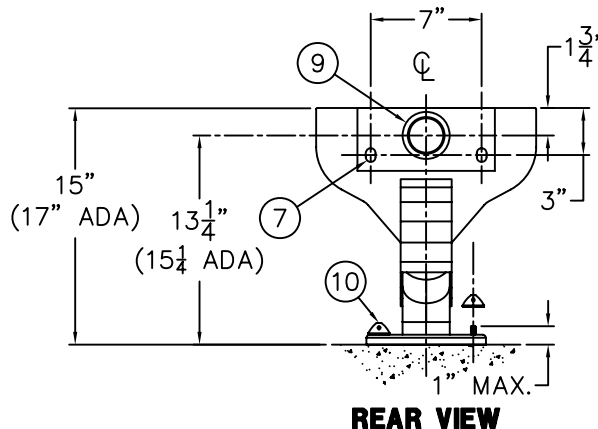
CONTINUE WITH THE GEBERIT IN-WALL TANK AND BOWL CARRIER SYSTEM INSTALLATION SHEETS REGARDING BOWL INSTALLATION.

- A- CENTERLINE OF FLOOR CLOSET FLANGE (2) SHOULD BE 12" ± 1/8" FROM FINISHED WALL AND FLUSH WITH FINISHED FLOOR.
- B- CLEAN DEBRIS OUT OF THE FLOOR FLANGE (2) BEFORE INSTALLING MOUNTING BOLTS (3) INTO THE SIDE SLOTS OF THE FLOOR FLANGE. BOLTS MUST BE NO HIGHER THAN 1" ABOVE FINISHED FLOOR.
- C- POSITION CLOSET WASTE GASKET (4) ON TOP OF THE FLOOR FLANGE PRESSING FIRMLY INTO PLACE.
- D- LUBRICATE THE GEBERIT FLUSHING INLET SLIP-FIT CONNECTION (5) WITH INSTALLER PROVIDED RUBBER SEAL LUBRICANT.
- E- PLACE TOILET BOWL INTO POSITION ALIGNING CARRIER STUDS (6) WITH FIXTURE MOUNTING SLOTS (7), ENSURE THAT THE FIXTURE OUTLET (8) IS OVER THE FLOOR CLOSET FLANGE (2) WHILE ENGAGING THE FLUSHING INLET (9) WITH THE CARRIER FLUSHING INLET SLIP-FIT GASKET CONNECTION (5).
- F- APPLY PRESSURE EVENLY ALL AROUND THE TOILET TO ENSURE A PROPER SEAL. COMPLETE INSTALLATION BY SECURING THE TOILET BOWL TO THE CARRIER MOUNTING STUDS (6) AND FLANGE (3) WITH HARDWARE PROVIDED (10).
- G- INSTALL DUAL FLUSH ACTUATOR (11). REFER TO DRAWING #9935-023-001.
- H- FOR SEAT INSTALLATION, REFER TO DRAWING #9935-040-001.

Geberit® In-Wall Flushing System intended for installation on wall with standard 2" x 6" construction.



SIDE VIEW



REAR VIEW