

FOR DROP-IN INSTALLATION:

- A-** USING BASIN AS A TEMPLATE, PLACE BASIN UPSIDE DOWN ON THE COUNTERTOP AND TRACE AROUND THE EDGE OF THE BASIN. OFFSET TRACED LINE INWARD 3/4".
- B-** CUT COUNTERTOP USING THE OFFSET LINE AS GUIDE. EXTRA CUTTING MAY BE NECESSARY FOR OPTIONAL FEATURES.
- C-** BEFORE ASSEMBLING BASIN TO COUNTERTOP DRY FIT TO ENSURE BASIN SITS PROPERLY INTO COUNTERTOP, REMOVING ANY EXCESS COUNTERTOP MATERIAL AS NEEDED SO BASIN SITS PROPERLY INTO COUNTERTOP.
- D-** APPLY A BEAD OF ADHESIVE SEALANT AROUND THE ENTIRE UNDERSIDE OF BASIN RIM.
- E-** PLACE BASIN INTO CUT OUT HOLE AND POSITION AND APPLY FIRM PRESSURE AROUND ENTIRE EDGE OF BASIN.

•NOTE•:

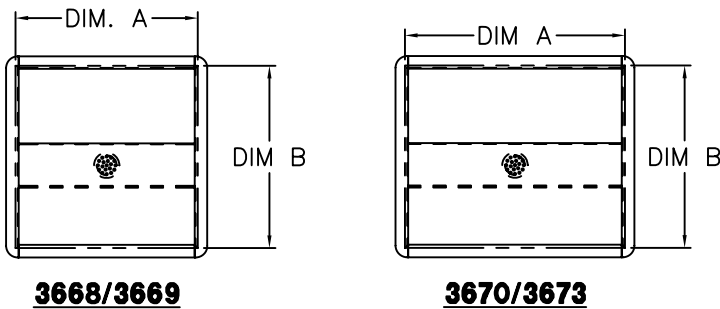
ALLOW ADHESIVE/ SEALANT (BY OTHERS) TO CURE, PER SEALANT MANUFACTURE'S RECOMMENDATIONS BEFORE ATTACHING PLUMBING (BY OTHERS).

CUT-OUT CHART

BASIN	DIM A	DIM B
3668/3669	14 $\frac{1}{2}$ "	14 $\frac{1}{2}$ "
3670/3673	17 $\frac{1}{2}$ "	14 $\frac{1}{2}$ "
3672 3671/3674	36 $\frac{1}{2}$ "	14 $\frac{1}{2}$ "

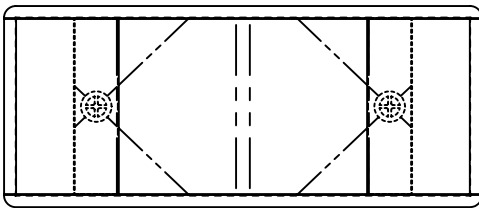
••NOTE••

SUBTRACT 1/2" FROM ALL DIMENSIONS FOR UNDER COUNTER MOUNT BASINS.

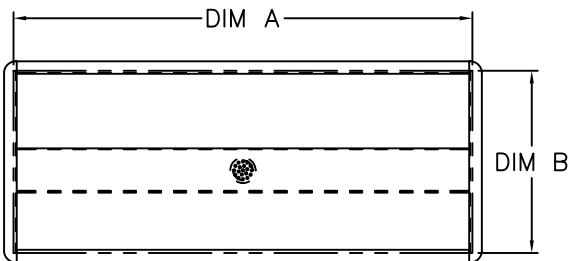


3668/3669

3670/3673



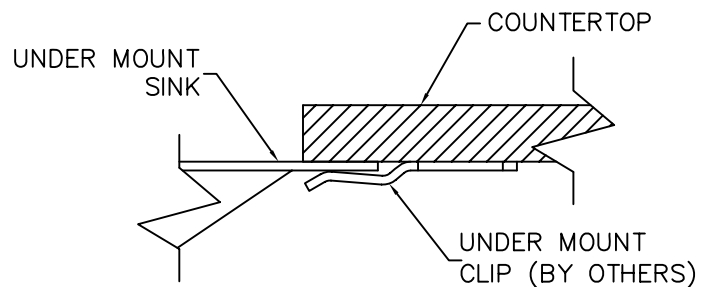
3672



3671/3674


FOR UNDER MOUNT INSTALLATION:

- A-** USE CUTOUT TEMPLATE, PROVIDED, TO TRACE AREA TO BE CUT.
- B-** EXTRA CUTTING MAY BE NECESSARY FOR OPTIONAL FEATURES.
- C-** CUT AND REMOVE MATERIAL TO ALLOW FOR INSTALLATION OF BASIN.
- D-** SECURE BASIN TO BOTTOM OF COUNTERTOP USING SEALER, MOUNTING CLIPS AND ANCHORING HARDWARE BY OTHERS.



ANCHORING CLIP DETAIL

NOTE: FOR OPTIONAL -OF OVERFLOW INSTALLATION SEE DRAWING # 9935-008-002.

 WWW.NEO-METRO.COM	TITLE NEO-METRO COLLECTION EBB BASIN MODELS *3668 THRU *3674		
	MANUFACTURE DATE MARCH 2002 TO PRESENT	DATE ISSUED 07/02/02 DATE REVISED 06/09/09	DRAWING NUMBER 9935-002-001