



# Contour Toilet Top Supply



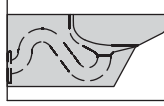
**Model 8955-T-1**  
Contour Toilet  
Top Supply, Off-Floor

All toilets specified on this sheet are configured with a 1-1/2" NPT top spud inlet for a top supply (exposed) flush valve (flush valve sold separately).

- **Commercial SIPHON JET Toilet**  
Requiring Commercial Water Supply Line to Operate. Water Flow Pressure 35 psi (2.41 bars); Water Supply Line 1"(25 mm).
- **TOP SUPPLY (Exposed) Flush Valve Configuration**  
Compatible Flush Valve (Sold Separately) Releases 1.6 Gallons (6 Liters) per Flush. Wall Supply Flush Valve configurations are also available.
- **16-Gage STAINLESS STEEL CONSTRUCTION**  
Satin Finish is Standard; Also Available in Mira (High Polish) Finish
- **Mounting/Wall Waste Configurations:**
  - (-1) Off-Floor, Wall Waste
  - (-2) On-Floor, Wall Waste
  - (-3) On-Floor, Floor Waste
- **ELONGATED TOILET BOWL**  
Punched for Toilet Seat with 5-1/2" (140 mm) Mounting Centers (Seat Sold Separately)
- **ADA Compliant Toilets Available** 
- **ANSI A112.19.2 Compliant** 

DESCRIPTION	MODEL/OPTION #
<b>CONFIGURATION</b> - Required Selection	INIT.

## TOP SUPPLY COMMERCIAL CONTOUR TOILET

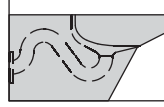


### Off-Floor, Wall Waste Configuration

- Satin Finish** (Standard) 8955-T-1
- Mira Finish** (High Polish) 8955-T-1-HP



**ADA COMPLIANT**  
Properly mounted 8955-T-1 toilets are ADA Compliant. ADA compliance is subject to the interpretation and requirements of local code authority. Please check your local ADA regulations.



### On-Floor, Wall Waste Configuration

- Satin Finish** (Standard) 8955-T-2
- Mira Finish** (High Polish) 8955-T-2-HP



**ADA COMPLIANT** (3" taller toilet for compliance)  
 **Satin Finish** (Standard) 8955-ADA-T-2  
 **Mira Finish** (High Polish) 8955-ADA-T-2-HP



### On-Floor, Floor Waste Configuration

- Satin Finish Toilet** 8955-T-3
- Mira Finish Toilet** 8955-T-3-HP



**ADA COMPLIANT** (3" taller toilet for compliance)  
 **Satin Finish** (Standard) 8955-ADA-T-3  
 **Mira Finish** (High Polish) 8955-ADA-T-3-HP



## APPROVAL FOR MANUFACTURE

COMPANY: \_\_\_\_\_

PROJECT NAME: \_\_\_\_\_

SIGNEE'S NAME WRITTEN CLEARLY: \_\_\_\_\_

DATE \_\_\_\_\_

AUTHORIZED SIGNATURE: \_\_\_\_\_



Neo-Metro is a Member of U.S. Green Building Council



**WARNING:** Cancer and Reproductive Harm - [www.P65Warnings.ca.gov](http://www.P65Warnings.ca.gov)

# Contour Toilet Top Supply




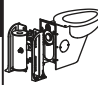




**Contour Toilet Top Supply**

**Model 8955-T-2**  
On-Floor, Wall Waste

All toilets specified on this sheet are configured with a 1-1/2" NPT top spud inlet for a top supply (exposed) flush valve (flush valve sold separately).

**Orders will not be processed until specification sheets are complete and signed. NO CANCELLATIONS.**

	DESCRIPTION	MODEL/OPTION #
<b>Add (+)</b>	<b>FLUSH VALVE SELECTION</b>	
	INIT.	
	<b>Top Supply (Exposed) Flush Valves</b>	
	Requires commercial water supply to operate; Water flow pressure 35 psi (2.41 bars); Water supply line is 1" (25 mm) diameter; Flush valve releases 1.6 gallons (6 liters) per flush; flush valve sold separately from fixture.	
	 <input type="checkbox"/> <b>Manual Flush</b>	<input type="checkbox"/> FV1.28-T <input type="checkbox"/> FV1.6-T
	 <input type="checkbox"/> <b>Electronic Sensor</b> Valve requires 120 VAC, 60Hz Plug-in Power Supply	<input type="checkbox"/> FV1.28-T-SO <input type="checkbox"/> FV1.6-T-SO
	 <input type="checkbox"/> <b>Battery-Powered Electronic Sensor</b> Valve requires 4 AA Batteries	<input type="checkbox"/> FV1.28-T-BSO <input type="checkbox"/> FV1.6-T-BSO
<b>Add (+)</b>	<b>ACCESSORIES</b>	
	INIT.	
	 <input type="checkbox"/> <b>In-Wall Mounting Carrier Assembly</b>	2954-720-000
	Adds more stability to off-floor fixtures; Includes left, right legs and waste connection for ease of installation.	
	<b>NOTE: INSTALLATION ON CONCRETE FLOORS RECOMMENDED. FOR OTHER FLOOR TYPES CONTACT CARRIER MANUFACTURER.</b>	
	<b>FOR USE WITH 8955, OFF-FLOOR ONLY.</b>	
	 <input type="checkbox"/> <b>ABS Plastic Elongated Toilet Seats with Open Front</b>	<input type="checkbox"/> <b>Black</b> HS-CB
	 <input type="checkbox"/> <b>ABS Plastic Elongated Toilet Seats with Cover</b>	<input type="checkbox"/> <b>Satin</b> HS-CSF Chrome Plated
	<input type="checkbox"/> <b>Mira (High Polish)</b> HS-CMF Chrome Plated	

# Contour Toilet Top Supply

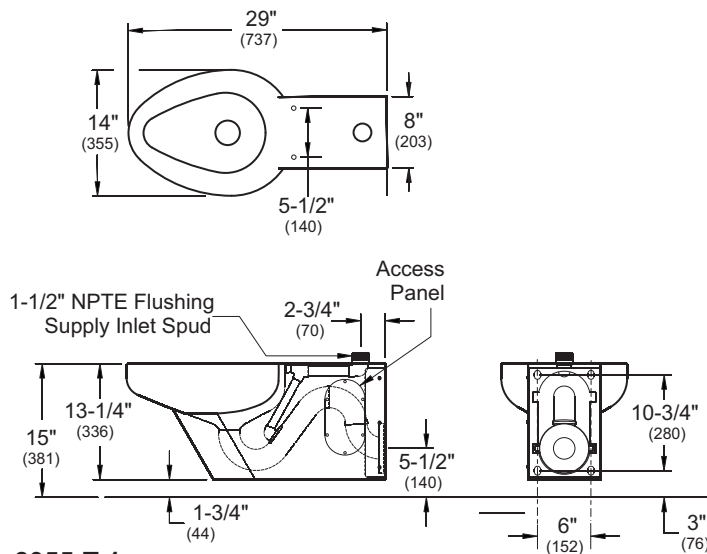
**PRODUCT Specification . . .** The Contour Toilet is a commercial-grade, siphon-jet toilet, manufactured of 16-gage, type 304 Satin Finish Stainless Steel (Standard). Mira Finish (High Polish) is optionally available. The fixture shall operate with a top supply (exposed) flush valve (sold separately). The toilet bowl is punched for an elongated seat with 5-1/2" (140 mm) mounting centers (sold separately). The fixture meets ASME/ANSI A112.19.2. The trapway can pass a 2-1/8" (54 mm) ball. Off-Floor toilets (8955-T-1 series) are manufactured with a 13-1/4" (336 mm) overall height but are mounted 1-3/4" (44 mm) off of the floor. On-Floor toilets (both 8955-T-2 and 8955-T-3 series) are manufactured with an overall height of 15" (381mm) and are wall mounted with the base resting on the floor.

compliance if the unit is mounted with a seat height between 17" to 19" (430 mm - 480 mm) above finished floor. An ADA compliant flush valve is available (sold separately) when specified. ADA compliance is subject to the interpretation and requirements of the local code authority.

**PLUMBING Specifications . . .** The Contour Toilet with Top Supply is configured for an exposed flush valve and includes a 1-1/2" NPT flushing inlet connection at the top of toilet housing. The exposed flush valve utilizes a commercial 1" (25 mm) water supply line. Off-Floor toilets (8955-T-1) shall be mounted on the wall with a wall waste rough-in 5-1/2" (140mm) above finished floor. The On-Floor toilets (8955-T-3) shall be mounted to a finished wall with a floor waste 4-1/4" (108mm) from finished wall. (Standard)



ADA On-Floor models are fabricated so that the flood rim of the fixture is 18" (430mm) above finished floor. Off-Floor models may meet



**8955-T-1**  
(OFF FLOOR, WALL WASTE)



**ADA COMPLIANCY**

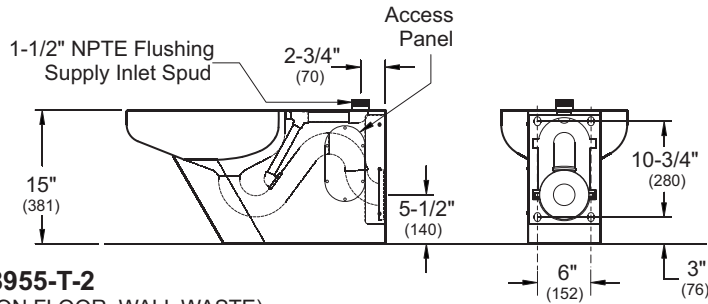
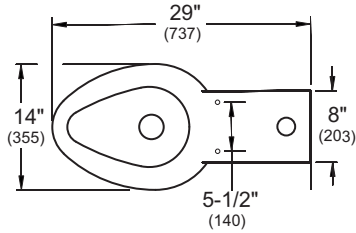
Model 8955-T-1 toilet can be used to meet ADA compliancy if the seat height of the toilet is raised to 17" to 19" (430 mm - 480 mm) above finished floor. Compliance is subject to the interpretation and requirements of local code authority. Please check your local ADA regulations.



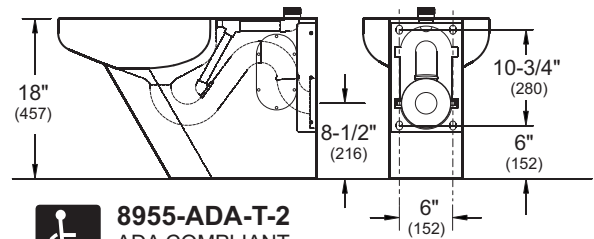
Neo-Metro assumes no responsibility for use of void or suspended data. All dimensions are nominal and subject to manufacturer change without notice.

**INSTALLATION INSTRUCTIONS ARE AVAILABLE**

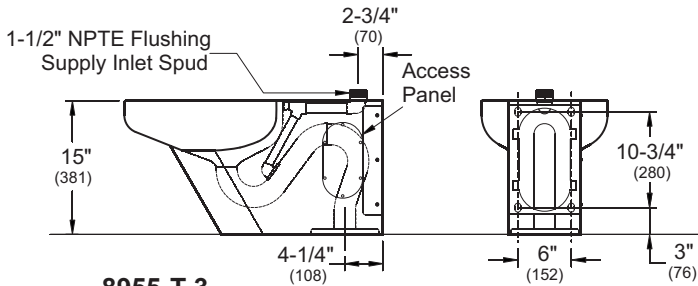
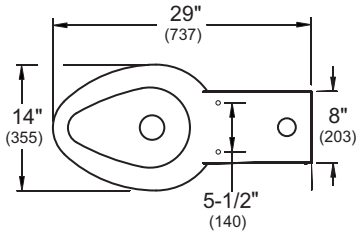
# Contour Toilet Top Supply



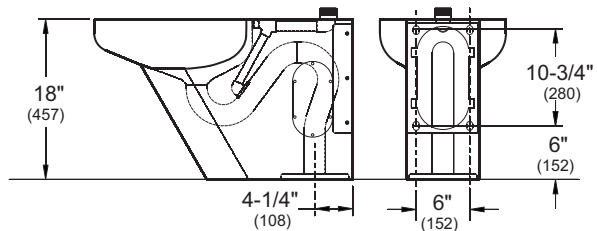
**8955-T-2**  
(ON FLOOR, WALL WASTE)



 **8955-ADA-T-2**  
ADA COMPLIANT  
(ON FLOOR, WALL WASTE)



**8955-T-3**  
(ON FLOOR, FLOOR WASTE)



 **8955-ADA-T-3**  
ADA COMPLIANT  
(ON FLOOR, FLOOR WASTE)

Neo-Metro assumes no responsibility for use of void or suspended data. All dimensions are nominal and subject to manufacturer change without notice.

**INSTALLATION INSTRUCTIONS ARE AVAILABLE**