

## EURO-URBAN Toilet

### FEATURES

#### TOILET DESIGNED TO WORK WITH GEBERIT CONCEALED TANK AND CARRIER SYSTEM

Tank and Carrier Sold Separately from Fixture. Geberit System is Installed into Wall Utilizing Standard Residential Water Line.

#### Heavy 16-Gage Stainless Steel Construction



Provided with Satin Finish Standard; Optional Mira High Polish Finish also available. Stainless Steel is a Recyclable Material.

#### Elongated Toilet Bowl; Punched & Threaded for Top Mounted

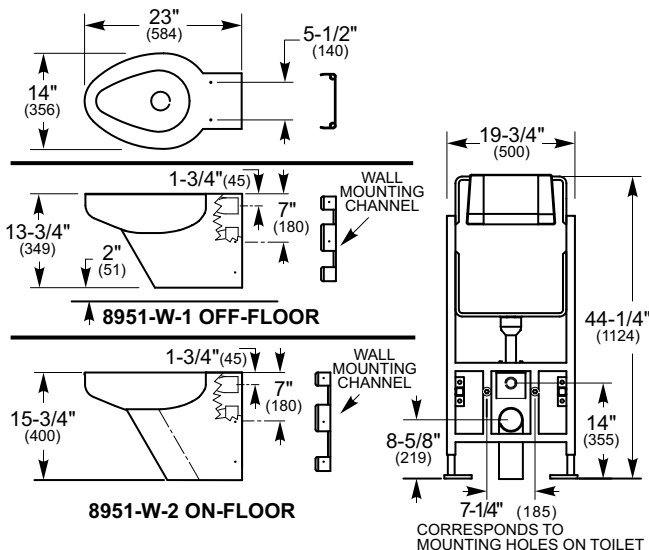
Toilet Seat 1/4"-20 x 1" Screws Provided, Seat Sold Separately, provided by others.

#### Available in both Off-Floor (-1) or On-Floor (-2) Configurations

Codes/Standards Applicable - ANSI A112.19.2

**Model 8951 with CTC**  
Satin Finish Stainless Steel  
Euro Urban Contour Toilet  
with Geberit Flushing System/Carrier  
(Satin Finish Dual Flush Push Panel)

Grab bars  
not included



(For complete dimensional data refer to Installation Details)

### Ordering Options

- ☐ **8951-W-1** Wall Supply, Off-Floor (Wall Waste), Satin Finish Stn. Stl. Toilet
- ☐ **8951-W-1-HP** Wall Supply, Off-Floor (Wall Waste), Mira High Polish Stainless Steel Toilet
- ☐ **8951-W-1-ADA** Wall Supply, Off-Floor (Wall Waste), Satin Finish Stn. Stl. Toilet (ADA Rim Height)
- ☐ **8951-W-1-ADA-HP** Wall Supply, Off-Floor (Wall Waste), Mira High Polish Stn. Stl. Toilet (ADA Rim Height)
- ☐ **8951-W-2** Wall Supply, On-Floor (Wall Waste), Satin Finish Stn. Stl. Toilet
- ☐ **8951-W-2-HP** Wall Supply, On-Floor (Wall Waste), Mira High Polish Stn. Stl. Toilet
- ☐ **8951-W-2-ADA** Wall Supply, On-Floor (Wall Waste), Satin Finish Stn. Stl. Toilet (ADA Rim Height)
- ☐ **8951-W-2-ADA-HP** Wall Supply, On-Floor (Wall Waste), Mira High Polish Stn. Stl. Toilet (ADA Rim Height)

**Refer to specification sheet for Geberit® In-Wall Systems for Wall-Hung Toilets for compatible units (Model # 111.335.00.5 or as required to suit conditions).**

**PRODUCT Specification . . .** The EURO-URBAN toilet is designed to work with the Geberit® concealed tank and carrier system (tank & carrier sold separately) with a Neo-Metro® Dual Flush Panel using 1.0 or 1.6 gallons (3.8 or 6 liters) per flush. Toilet shall be fabricated of 16-gage, Type 304 stainless steel with Satin Finish or optionally available in Mira (High Polish) Finish. Toilet is available in Off-floor (wall hung) Wall Outlet or On-floor Wall Outlet configurations. Toilet bowl is an elongated type and is punched and tapped for a top mounting toilet elongated type. Seat sold separately. Trapway shall pass a 2-1/8" (54 mm) ball. Toilets meet ASME/ANSI guidelines as outlined in A112.19.2M-1998.

**PLUMBING Specification . . .** The toilet must use a Geberit® concealed (in-wall) tank and carrier system. Geberit® carrier requires 19-3/4" (502mm) clearance between 2" x 6" (51 mm x 152 mm) wall studs. Tank releases an average 1 or 1.6 gallons (3.8 or 6 liters) per flush using Neo-Metro® flush panel. Both water inlet and waste outlet are through the wall.



### APPROVAL FOR MANUFACTURE



Recyclable  
Product

COMPANY: \_\_\_\_\_

PROJECT NAME: \_\_\_\_\_

SIGNEE'S NAME WRITTEN CLEARLY: \_\_\_\_\_ DATE: \_\_\_\_\_

AUTHORIZED SIGNATURE: \_\_\_\_\_

**WARNING:** Cancer and Reproductive Harm - [www.P65Warnings.ca.gov](http://www.P65Warnings.ca.gov)

**NEO-METRO**  
Division of Acorn Engineering Company®, A member of Morris Group International™  
15125 Proctor Ave. • City of Industry, CA 91746 USA  
800.591.9050 • 626.855.4854