


## Contour Urinal Top Supply



**Model 8944-T-1**  
Contour HEU Urinal  
Top Supply, Off-Floor, Wall Waste

All urinals specified on this sheet are configured with a 3/4" NPT top spud inlet for a top supply flush valve (flush valve sold separately).



- **Rounded Front Commercial HEU WASHOUT Urinal Requiring Commercial Water Supply Line to operate. Water Flow Pressure 25 psi (1.72 bars); Water Supply Line 3/4" (19 mm).**
- **TOP SUPPLY (Exposed) Flush Valve Configuration Compatible Flush Valve (Sold Separately) requiring a 1/8 GPF (0.47 Liters per Flush) to 1/2 GPF (1.9 Liters per Flush) flush valve.**
- **18-Gauge Stainless Steel Construction With 16-Gauge Bowl #4 Satin Finish is Standard; Also Available in Mira Finish (High Polish)**
- **ADA Compliant Urinals are Compliant when Properly Installed** 
- **ANSI, UFAS Compliant**

**ADA COMPLIANT**




Properly mounted 8944-T urinals are ADA Compliant. ADA compliance is subject to the interpretation and requirements of local code authority. Please check your local ADA regulations



DESCRIPTION	MODEL/OPTION #
<b>CONFIGURATION</b> - Required Selection	INIT.
<b>TOP SUPPLY COMMERCIAL CONTOUR URINAL</b>	
<b>Off-Floor, Wall Waste Configuration</b>	
<input type="checkbox"/> #4 Satin Finish (Standard) 8944-T-1	
<input type="checkbox"/> Mira Finish (High Polish) 8944-T-1-HP	
<input type="checkbox"/> White Gloss powder coat 8944-T-1-EG10	
<input type="checkbox"/> Matte Black powder coat 8944-T-1-EG22	
<b>FLUSH VALVE SELECTION</b>	
<b>Top Supply (Exposed) Flush Valves</b> Requires a high efficiency type rated at 1/8 GPF (0.47 Liters per flush) to 1/2 GPF (1.8 Liters per flush) flush valve. Urinal is supplied with 3/4" NPT flushing inlet connection and 1-1/2" OD plain end P-Trap.	
 <input type="checkbox"/> <b>Manual Flush</b>	<input type="checkbox"/> 1/8 GPF FV-T <input type="checkbox"/> 1/2 GPF FV-T (Not Available in California)
<input type="checkbox"/> <b>Flush Valve By Others</b>	
<b>Orders will not be processed until specification sheets are complete and signed. NO CANCELLATIONS.</b>	
 <b>APPROVAL FOR MANUFACTURE</b>	
COMPANY: _____	
PROJECT NAME: _____	
SIGNEE'S NAME WRITTEN CLEARLY: _____	
DATE _____	
AUTHORIZED SIGNATURE: _____	

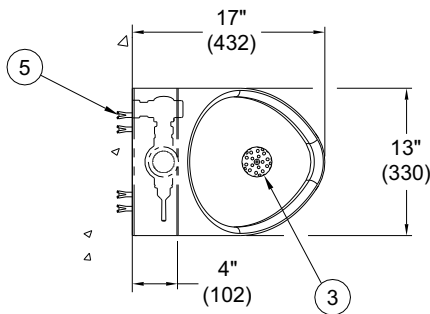
## Contour Urinal Top Supply

**PRODUCT Specification...** Contour Urinal is a washout type urinal. Fixture is fabricated from 18-gauge housing and 16-gauge Bowl, Type 304 stainless steel. A #4 Satin Finish stainless steel is standard. The urinal is also available in Mira Finish (High Polished) stainless steel. Fixture includes exposed spray nozzle and beehive dome strainer. Contoured surface makes for easy cleaning. Urinals shall be wall mounted with a recommended rim height of 20" (508 mm) above finished floor. Urinals meet ASME/ANSI guidelines as outlined in A112.19.2.

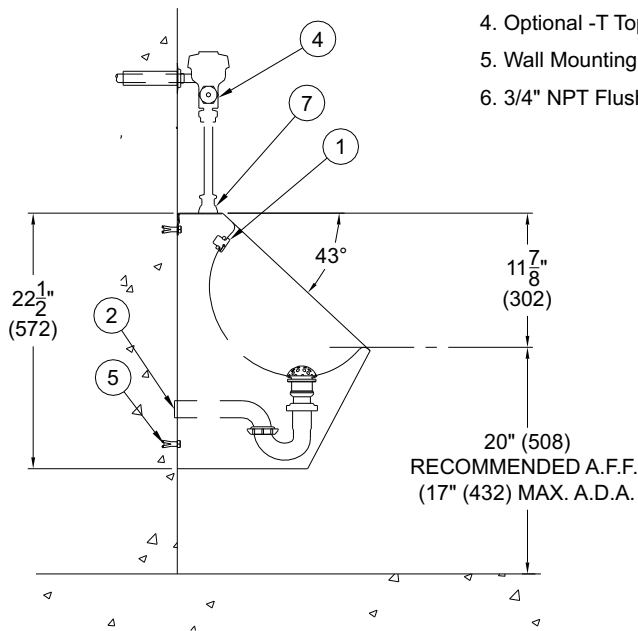
 The urinal is ADA compliant if installed with rim height of 17" (432 mm) and appropriate flush valve is used. ADA compliance is subject to the

interpretation and requirements of the local code authority. Please check your local accessibility code requirements.

**PLUMBING Specification...** Wall mounted wash out urinal utilizes a commercial supply line water inlet (3/4" IPS or 19mm) into flush valve, 3/4" NPT water supply inlet into fixture and 2" in-wall waste line. The urinal is supplied with a stainless steel beehive dome strainer and 1-1/2" P-Trap assembly. Check applicable plumbing codes. Model 8944-T is configured with a top spud inlet for a top supply (exposed) flush valve. Flush valves sold separately. Compatible flush valves rated at 1/8 gallon (0.47 Liters) to 1/2 gallon (1.89 Liters) per flush.



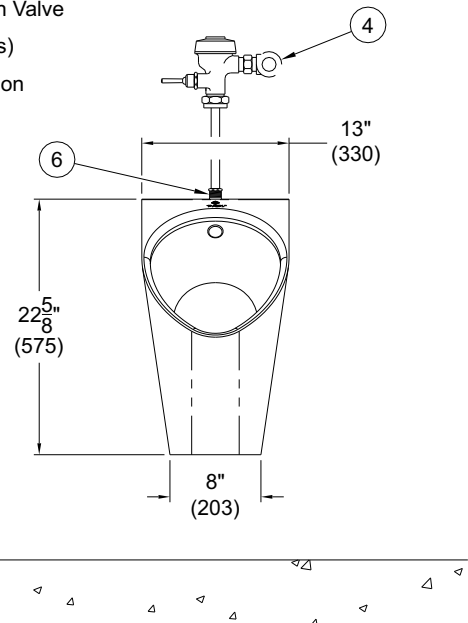
1. Flush Nozzle
2. 1-1/2" O.D. P-Trap Assembly
3. Removable Strainer Assembly
4. Optional -T Top Supply -FV Flush Valve
5. Wall Mounting Anchor (By Others)
6. 3/4" NPT Flushing Inlet Connection



**\* ADA COMPLIANT**

Properly mounted 8944-T-1 urinals are ADA Compliant. The rim of the urinal is recommended no more than 17" (432 mm) above finished floor. An ADA compliant flush valve must also be used.

ADA compliance is subject to the interpretation and requirements of local code authority. Please check your local ADA regulations.



Neo-Metro assumes no responsibility for use of void or suspended data. All dimensions are nominal and subject to manufacturer change without notice.

**INSTALLATION INSTRUCTIONS ARE AVAILABLE**