

### FOR DROP-IN INSTALLATION:

- A-** USING BASIN AS A TEMPLATE, PLACE BASIN UPSIDE DOWN ON THE COUNTERTOP AND TRACE AROUND THE EDGE OF THE BASIN. OFFSET TRACED LINE INWARD 3/4".
- B-** CUT COUNTERTOP USING THE OFFSET LINE AS GUIDE. EXTRA CUTTING MAY BE NECESSARY FOR OPTIONAL FEATURES.
- C-** BEFORE ASSEMBLING BASIN TO COUNTERTOP DRY FIT TO ENSURE BASIN SITS PROPERLY INTO COUNTERTOP, REMOVING ANY EXCESS COUNTERTOP MATERIAL AS NEEDED SO BASIN SITS PROPERLY INTO COUNTERTOP.
- D-** APPLY A BEAD OF ADHESIVE SEALANT AROUND THE ENTIRE UNDERSIDE OF BASIN RIM.
- E-** PLACE BASIN INTO CUT OUT HOLE AND POSITION AND APPLY FIRM PRESSURE AROUND ENTIRE EDGE OF BASIN.

#### •NOTE•:

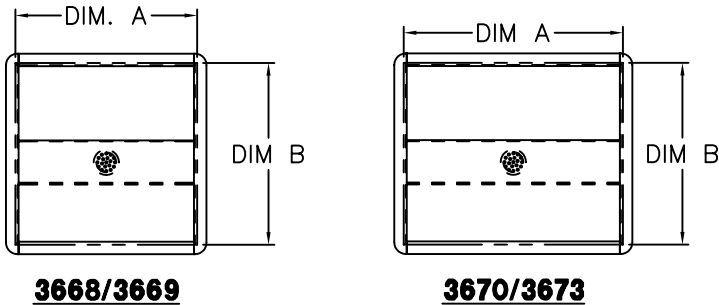
ALLOW ADHESIVE/ SEALANT (BY OTHERS) TO CURE, PER SEALANT MANUFACTURE'S RECOMMENDATIONS BEFORE ATTACHING PLUMBING (BY OTHERS).

### CUT-OUT CHART

BASIN	DIM A	DIM B
3668/3669	14 1/2"	14 1/2"
3670/3673	17 1/2"	14 1/2"
3672 3671/3674	36 1/2"	14 1/2"

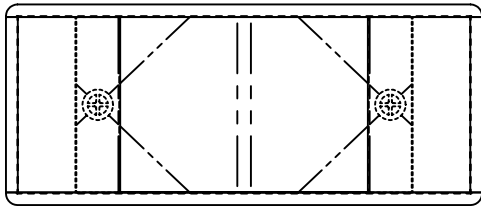
#### •NOTE•:

SUBTRACT 1/2" FROM ALL DIMENSIONS FOR UNDER COUNTER MOUNT BASINS.

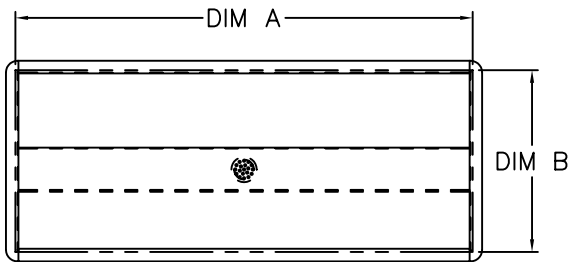


**3668/3669**

**3670/3673**



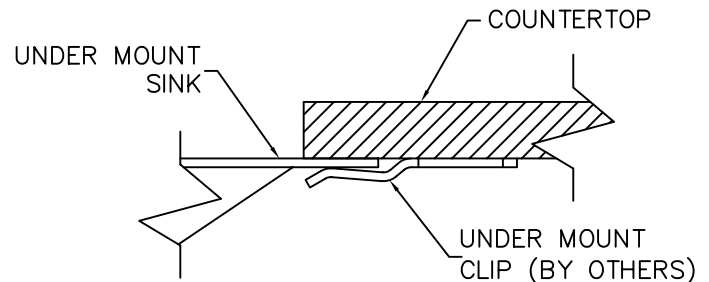
**3672**



**3671/3674**

### FOR UNDER MOUNT INSTALLATION:

- A-** USE CUTOUT TEMPLATE, PROVIDED, TO TRACE AREA TO BE CUT.
- B-** EXTRA CUTTING MAY BE NECESSARY FOR OPTIONAL FEATURES.
- C-** CUT AND REMOVE MATERIAL TO ALLOW FOR INSTALLATION OF BASIN.
- D-** SECURE BASIN TO BOTTOM OF COUNTERTOP USING SEALER, MOUNTING CLIPS AND ANCHORING HARDWARE BY OTHERS.



**ANCHORING CLIP DETAIL**

NOTE: FOR OPTIONAL -OF OVERFLOW INSTALLATION SEE DRAWING # 9935-007-001.